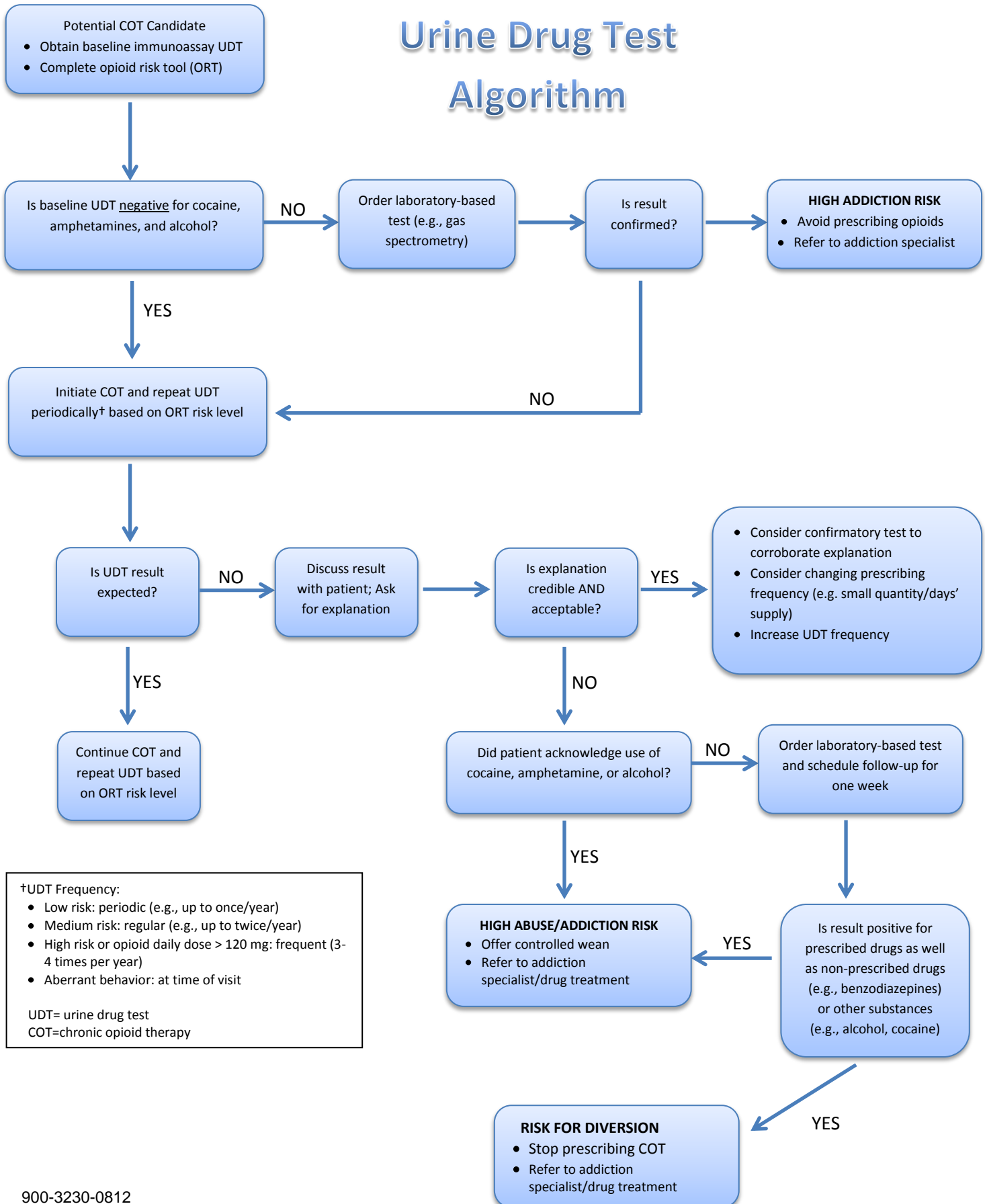


Urine Drug Test Algorithm



†UDT Frequency:

- Low risk: periodic (e.g., up to once/year)
- Medium risk: regular (e.g., up to twice/year)
- High risk or opioid daily dose > 120 mg: frequent (3-4 times per year)
- Aberrant behavior: at time of visit

UDT= urine drug test
COT=chronic opioid therapy